

## “SIRIO” SYSTEM

**SYSTEM TYPE:**

- Visible fixing

**CLADDING TILES TYPE:**

- Laminate gres tiles;
- fibercement;
- others thin tiles of big size

**WORKINGS ON TILES:**

- passing holes

**SYSTEM COMPONENTS:**

The “Sirio” system is made of the following components:

- extruded profile “ET1” and “ET1m” in aluminium alloy EN 6060 T5 (or similar when needed);
- aluminium rivets in aluminium alloy EN 6060 T5 with a large head to fasten the cladding tile to the vertical rail “ET1” or “ET1m” (or other kind of bolts or screws, depending on a specific project);
- standard supporting brackets type “A12” and “B12”, in aluminium alloy EN 6060;
- nuts and bolts to fasten “ET1” and “ET1m” profile to the brackets, in stainless steel class A2;
- anchors to fix the brackets on the wall, mechanical or epoxy-resin based, as needed;
- neoprene gasket tape, to gauge and consolidate the tiles, in different thickness as needed;

**SYSTEM DESCRIPTION :**

The system is based on the installation of the vertical aluminium rails “ET1” placed on the wall with a pace depending on the tile width and the design vertical joint between the tiles, and installation of “ET1m” vertical rails placed with a intermediate sub-pace, which depends on mounting requirements.

The vertical rails “ET1” and “ET1m” are designed and shaped in order to fit without drillings the following components:

- the brackets supporting vertical rails on the wall, put in place with their design pace;
- to provide an adequate supporting surface to the tile and a solid response to the application of the rivets (or other screws and bolts) to fix the cladding tiles.

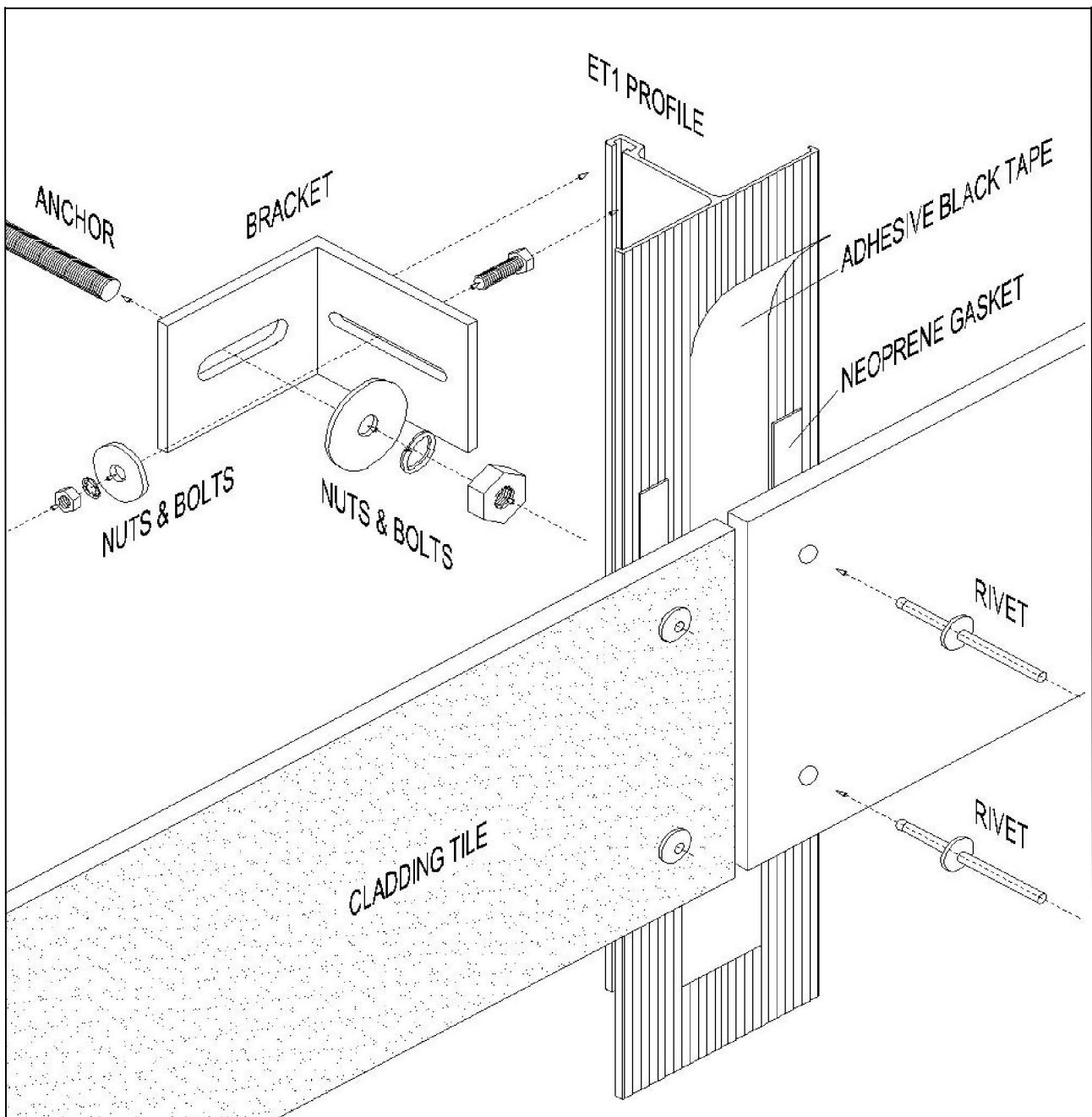
Profiles can be supplied raw or electro-coloured, if required. The cladding tile is consolidated to the vertical structure by the interposition of a neoprene gasket of a suitable thickness and where necessary, application of silicone tips.

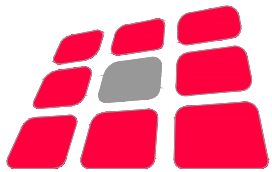
The main characteristic of this system is that the cladding tiles are mounted using rivets, which are visible from outside. Therefore, the tiles must be drilled prior the installation. The drilling pattern of the tiles, hole size and their position, is defined by the technical requirements provided from the tile manufacturers, to ensure optimum use of the tiles and their durability.

According to the architectural requirements, the rivets (or other fasteners) could be left raw or can be painted of the same color of the tiles and are virtually invisible even from a close distance.

**SYSTEM SIZES:**

- The standard distance, between the wall and the internal face of the panels is 110 mm, plus the tile thickness, with a standard regulation of  $\pm 25$  mm.
- The standard thickness of the tiles for this system is from 3,5 mm to 12 mm average.





# DALLERA

Tecnologie S.r.l.

Società unipersonale

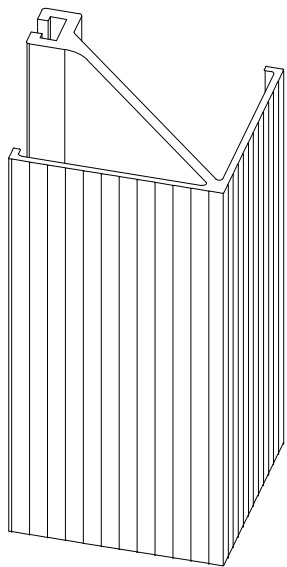
Via Trivulzina, 13/48 - Pad. 20 - 20864 Agrate Brianza (MB)

Tel. 039 9711592 - Fax 039 9711593

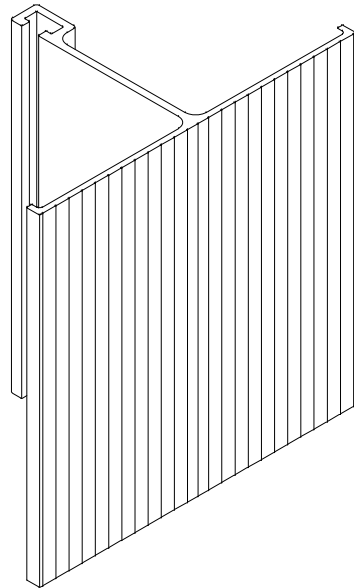
[www.dalleratecnologie.com](http://www.dalleratecnologie.com) [info@dalleratecnologie.com](mailto:info@dalleratecnologie.com)

# "SIRIO" SYSTEM

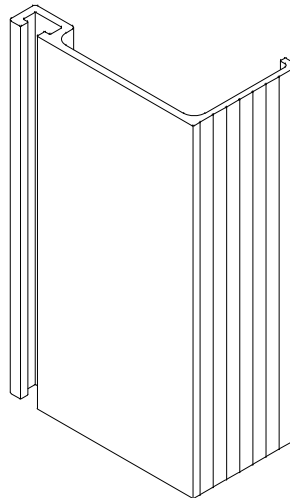
## STANDARD COMPONENTS



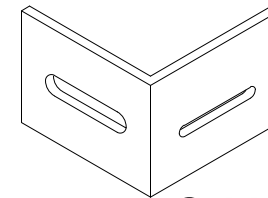
ET1a



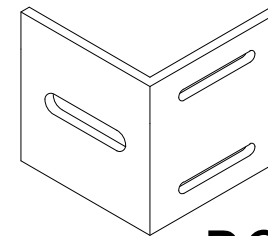
ET1



ET1m

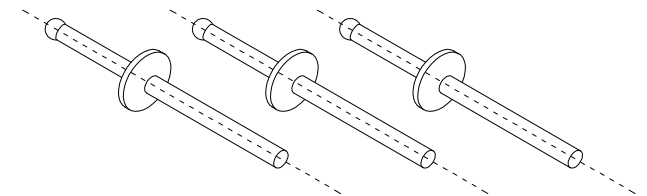


SINGLE BRACKET



DOUBLE BRACKET

RIVETS



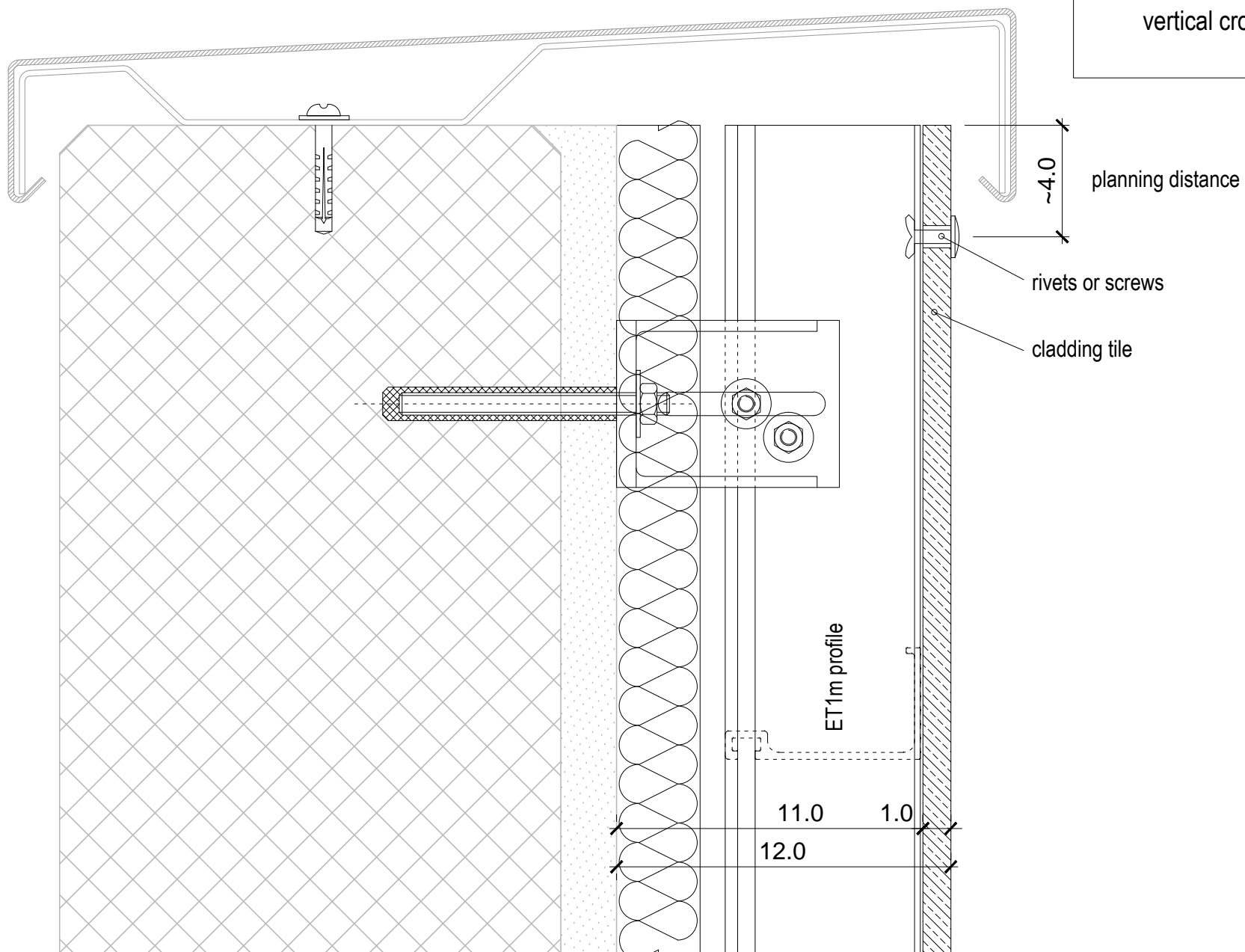
# "SIRIO" SYSTEM

STANDARD DETAIL FOR

FACADE TOP

vertical cross-section - SCALE 1:2

ALUMINIUM SHEET CLOSING

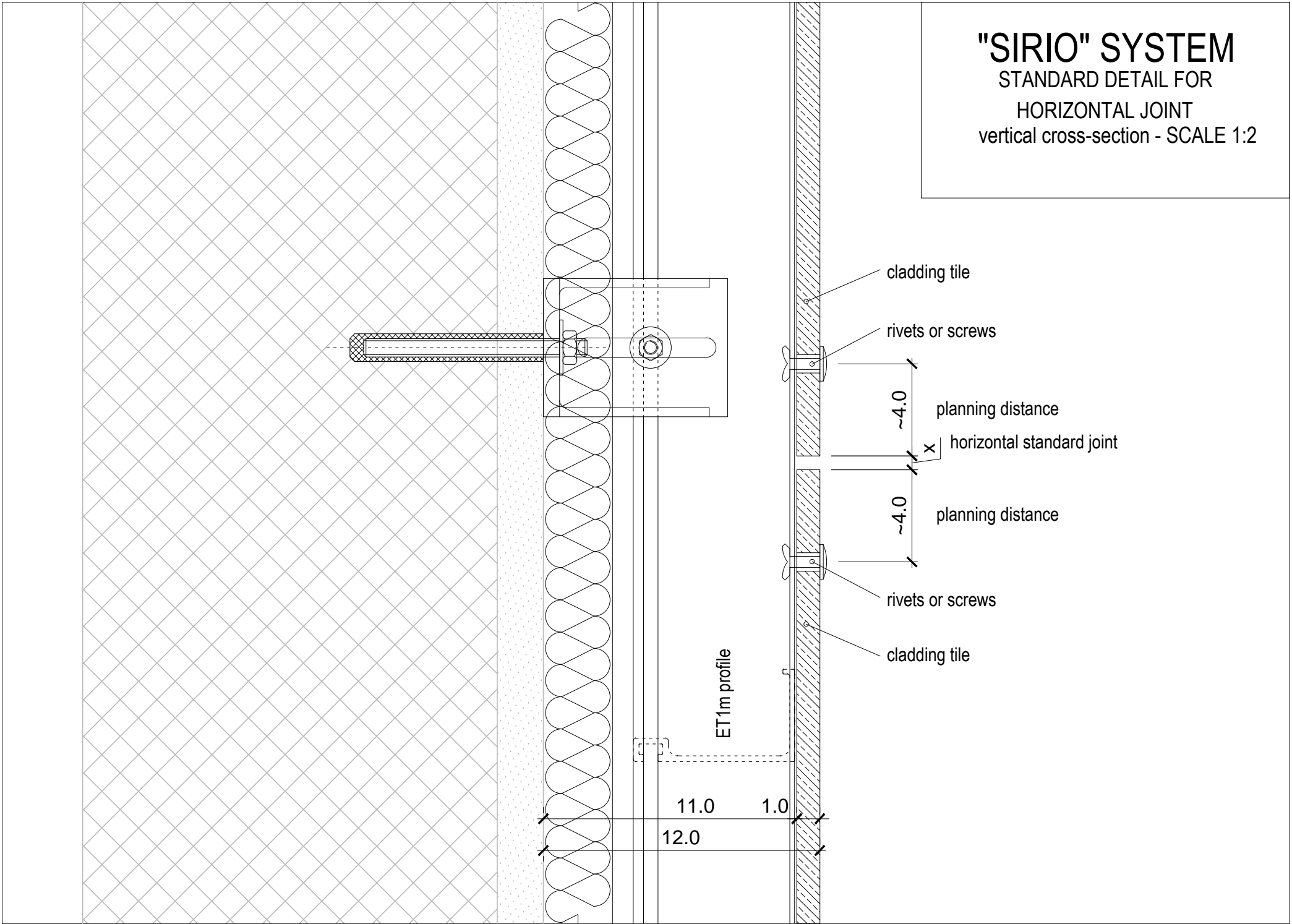


# "SIRIO" SYSTEM

STANDARD DETAIL FOR

HORIZONTAL JOINT

vertical cross-section - SCALE 1:2

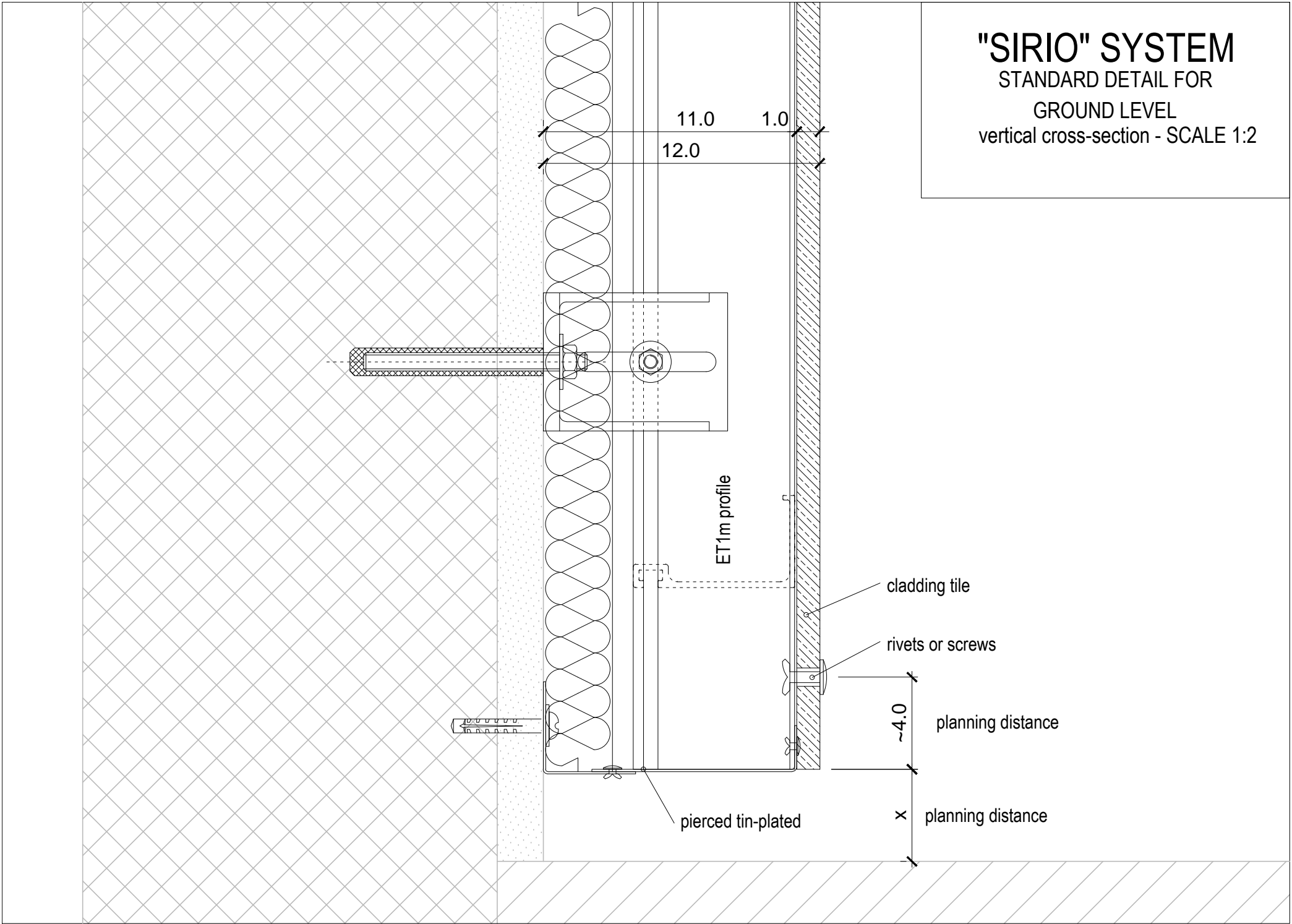


# "SIRIO" SYSTEM

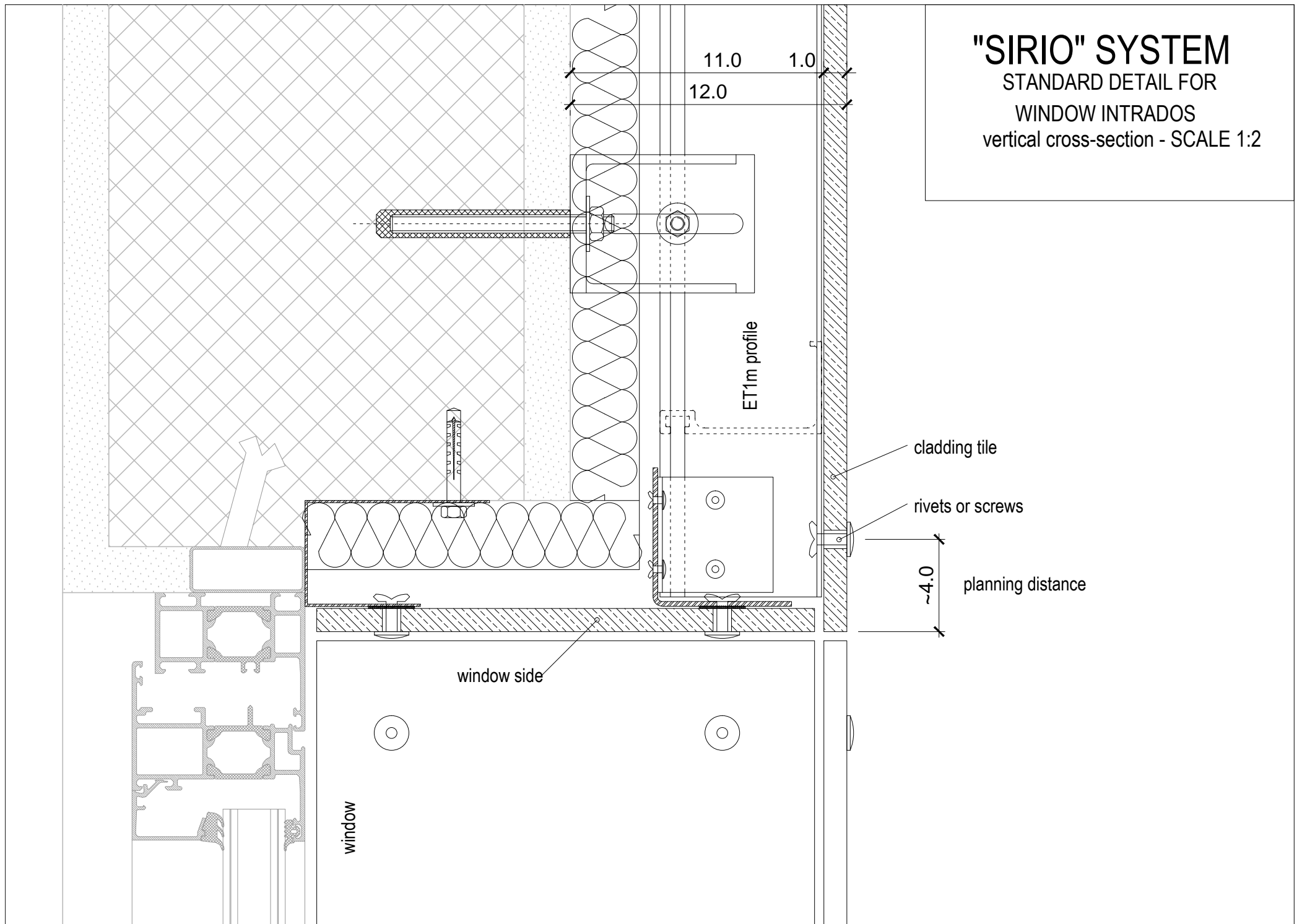
STANDARD DETAIL FOR

GROUND LEVEL

vertical cross-section - SCALE 1:2



**"SIRIO" SYSTEM**  
STANDARD DETAIL FOR  
WINDOW INTRADOS  
vertical cross-section - SCALE 1:2

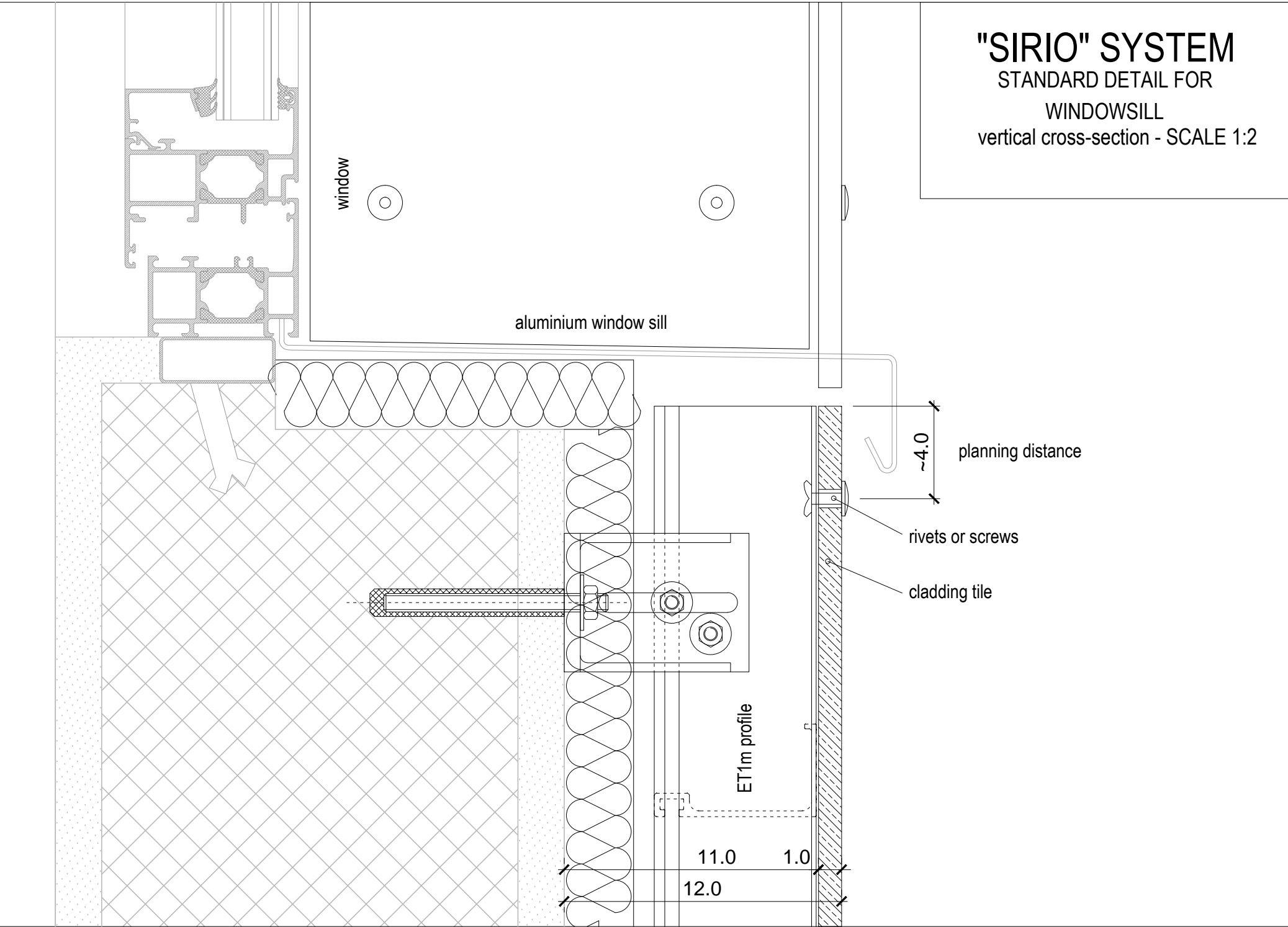


# "SIRIO" SYSTEM

STANDARD DETAIL FOR

WINDOWSILL

vertical cross-section - SCALE 1:2



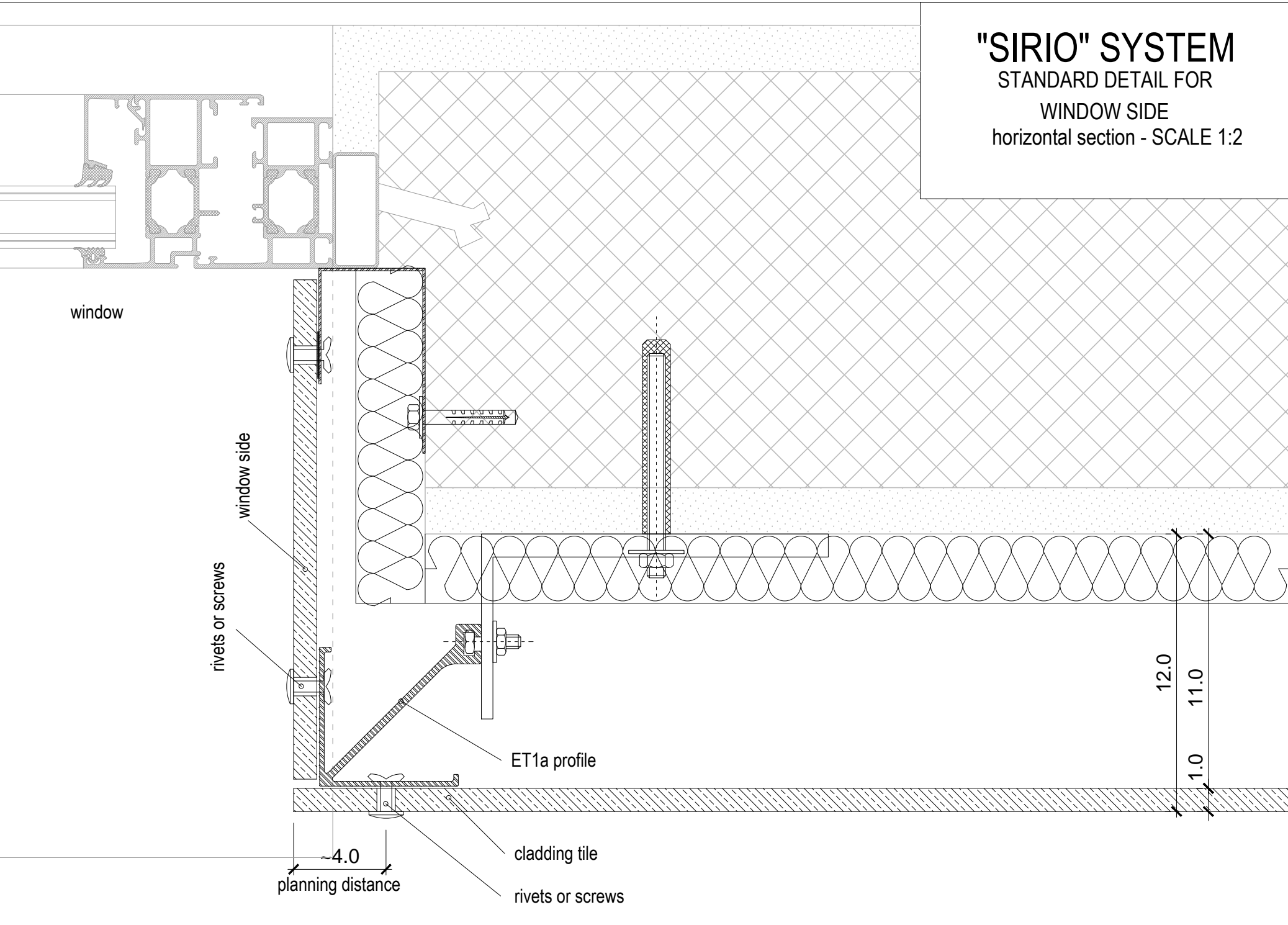


# "SIRIO" SYSTEM

STANDARD DETAIL FOR

WINDOW SIDE

horizontal section - SCALE 1:2



window

window side

rivets or screws

ET1a profile

cladding tile

rivets or screws

~4.0  
planning distance

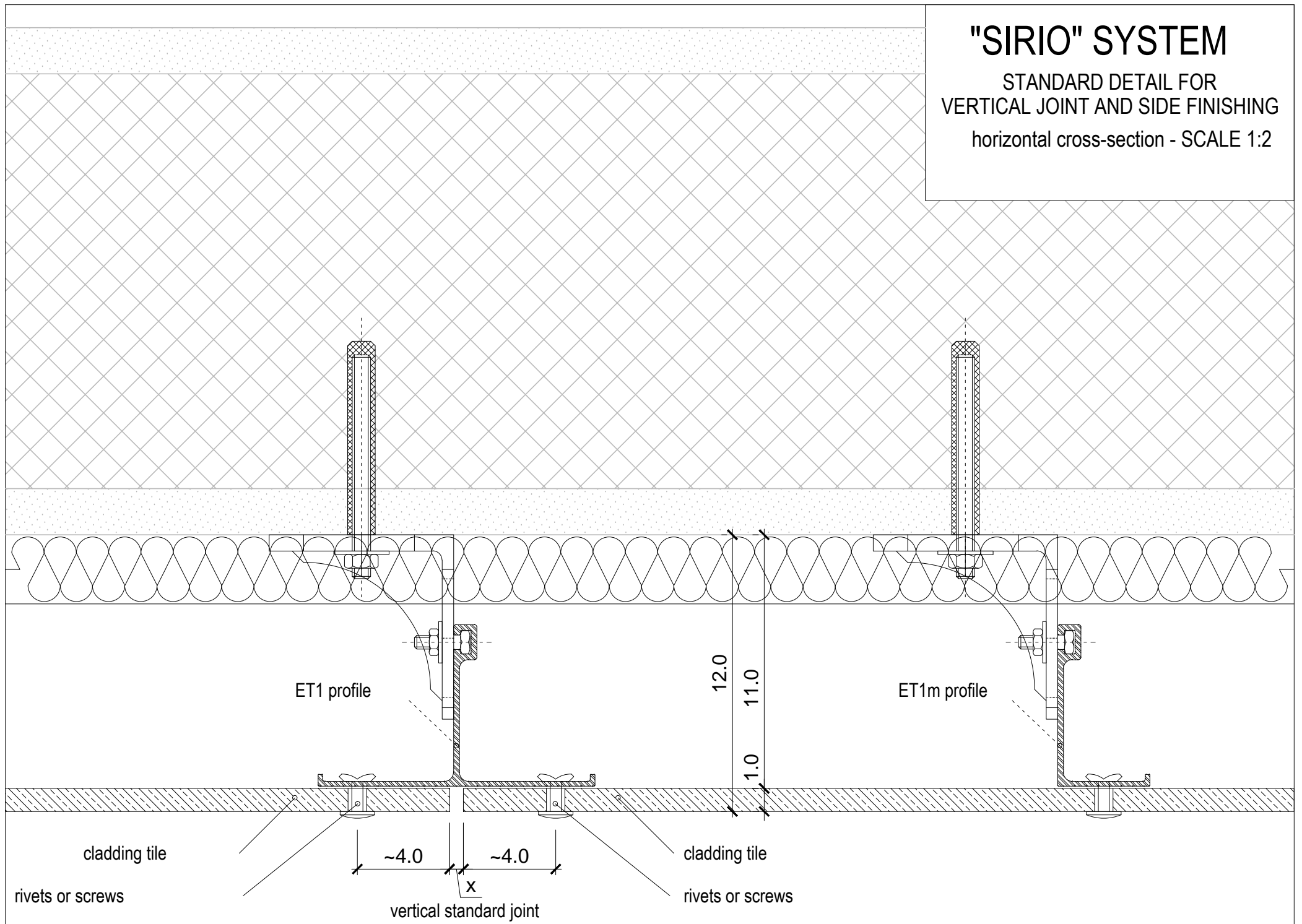
12.0

11.0

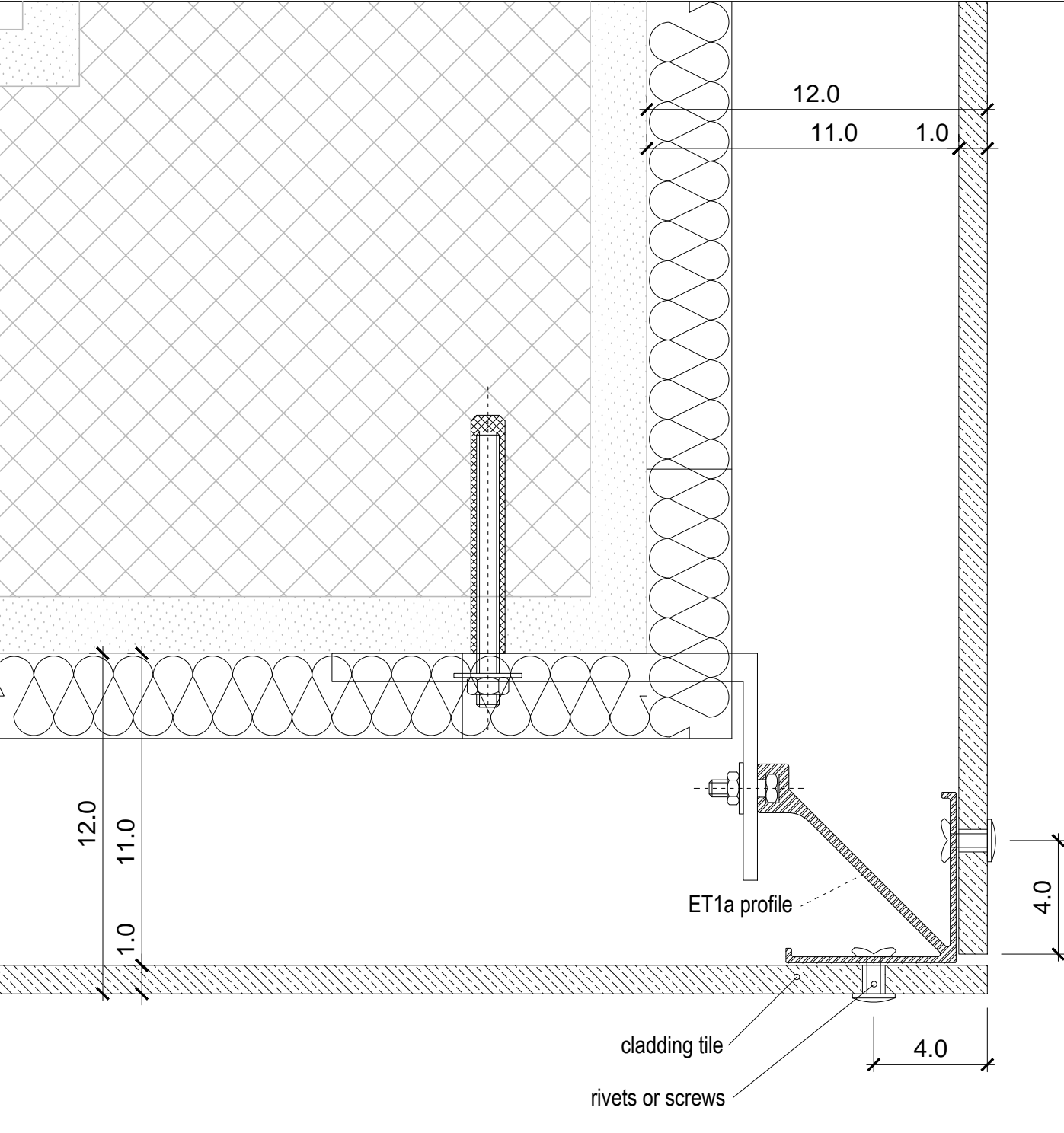
1.0

# "SIRIO" SYSTEM

STANDARD DETAIL FOR  
VERTICAL JOINT AND SIDE FINISHING  
horizontal cross-section - SCALE 1:2

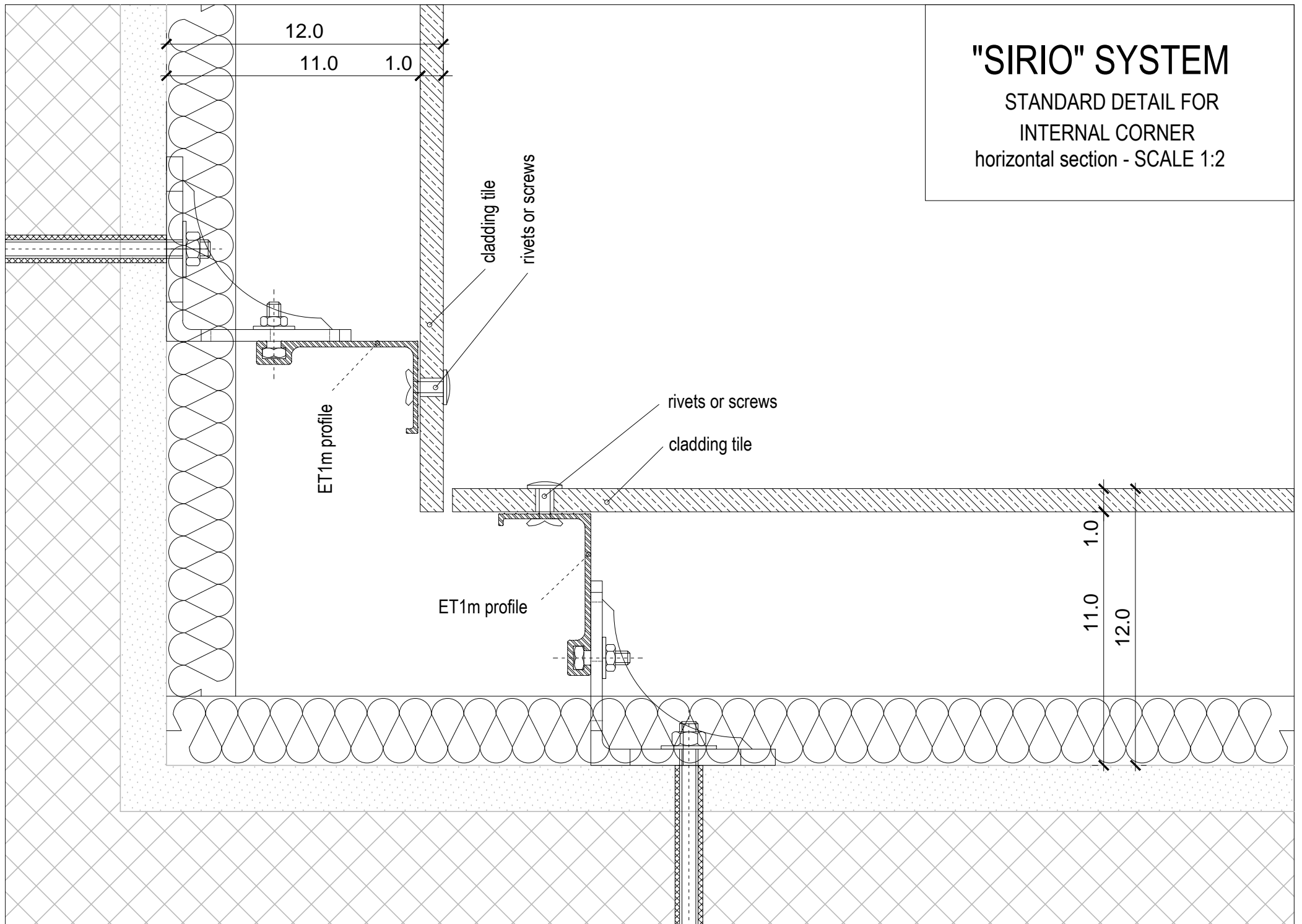


**"SIRIO" SYSTEM**  
STANDARD DETAIL FOR  
EXTERNAL CORNER  
horizontal section - SCALE 1:2



# "SIRIO" SYSTEM

STANDARD DETAIL FOR  
INTERNAL CORNER  
horizontal section - SCALE 1:2



# "SIRIO" SYSTEM

PANEL SET-UP  
vertical cross-section - SCALE 1:2

